

# Closed Eaves Cavity Wall Lintels - CGE90/100

Open back lintels

## Benefits

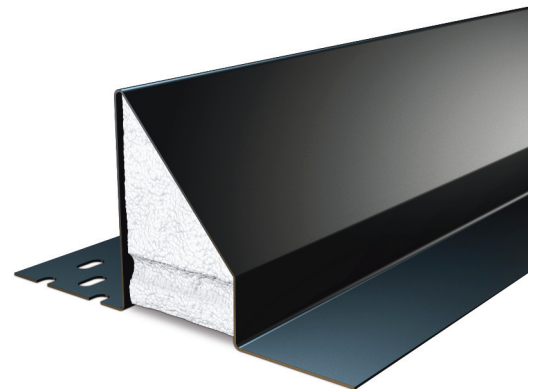
### Easy-to-use open back profile

Open back style lintels allow masonry to be built up continuously on inner leaf.

**Duplex Corrosion Protection System**  
Ensures optimum durability and longevity

**Integral plaster key**  
With staggered slots to the inner flange and ribbed underside of insulation

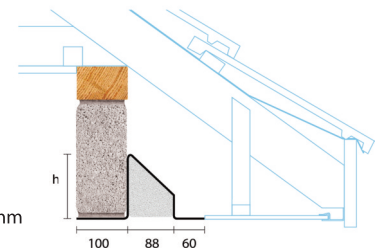
**Continuous insulation**  
Maximising thermal efficiency, minimising cold bridging



## 90 -125mm Cavity 100-115mm Inner Leaf



Standard lengths are available in 150mm increments up to 1800, 300mm increments from 1800mm to 2700.



**Note:** For heavy duty application or lintel in excess of 2.7m please refer to the CN71 and CN81 range of lintels.

### CGE90/100

Standard lengths (mm)	900-1500	1800-2100	2400-2700
SWL 1:1/19:1 (kN)	25	22	20
Weight (kg/m)	7.6	8.3	10.6
Nominal height 'h' (mm)	95	115	115

To achieve the stated safe working load (SWL), closed eaves lintels must be built in with solid blockwork and continuous timber wall-plates. Allow 150mm at each end for bearing support.