

# Cavity Wall Lintel - CG90/100

## Open back lintel

### Benefits

#### Easy-to-use open back profile

Allows masonry to be built up continuously on both outer and inner leaf

#### Materials used in Lintels

The **CG**, **CH** and **CX** ranges are formed from galvanised steel, then powder coated

#### Duplex corrosion protection

Ensures optimum durability and longevity

#### Built-in DPC

Saves time in construction and means cavity is easy to clean without risk of damage to DPC

#### Integral Plaster key

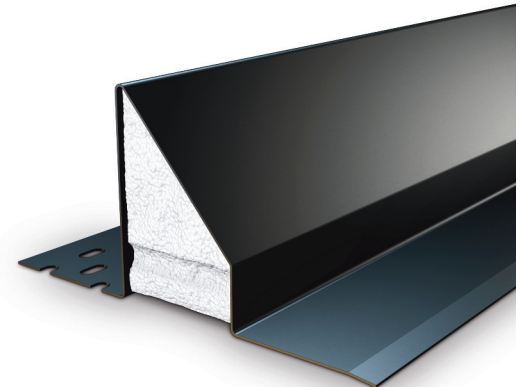
With staggered slots applied to the inner flange and ribbed underside of insulation (perforated steel baseplate on **CH** and **CX** range)

#### Continuous insulation

Maximising thermal efficiency, minimising cold bridging

#### Features:

- Triangulated masonry load
- Supporting uniformly distributed masonry load
- Supporting uniformly distributed timber floor and roof loads
- Suitable for fair faced inner leaf masonry



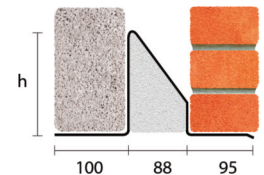
## 90-105mm Cavity 100-115mm Inner Leaf

All ratios are shown inner to outer

### Standard Duty



Standard lengths are available in 150mm increments up to 3000mm, 300mm at lengths from 3000mm to 3600mm.



### CG90/100

Standard lengths (mm)	750-1500	1650-1800	1950-2100	2250-2400	2550-2700	2850-3600
SWL 1:1/3:1 (kN)	15	18	20	22	26	26
Weight (kg/m)	6.1	7.6	8.3	8.9	10.2	13.0
Nominal height 'h' (mm)	140	140	160	180	220	220

**i** The SWL (safe working load) is based on the total UDL (uniform distributed load) over maximum span using 150mm end bearings.

**Note:** Whilst the above information is intended to offer general guidance regarding typical applications, it should not be considered as comprehensive. Requirements not fully covered by the above should be referred to our technical services department for individual consideration.

#### Catnic

Pontypandy Industrial Estate  
Caerphilly  
CF83 3GL  
T: 029 2033 7900  
F: 029 2086 7796

01/2015

[www.catnic.com](http://www.catnic.com)

Care has been taken to ensure that the contents of this publication are accurate, but Tata Steel Europe Limited and its subsidiaries, which includes Tata Steel UK Limited, do not accept responsibility or liability for errors or information that is found to be misleading. Before using products or services supplied or manufactured by Tata Steel Europe Limited and its subsidiaries, customers should satisfy themselves as to their suitability.

© Copyright 2015 Tata Steel UK Limited.