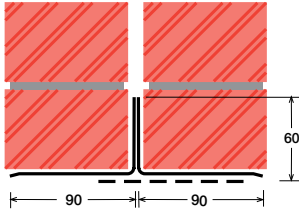


# Double Wall Lintels

**LIGHT DUTY**  
**2 LA 60**



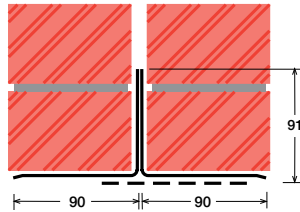
**Lintel Section Properties**

Ixx	30.95 cm <sup>4</sup>
Zxx	6.24 cm <sup>3</sup>
Weight	7.29 kg/m
Area	9.28 cm <sup>2</sup>
Ryy	4.37 cm

**Typical Optional Features**

<i>Option</i>	<i>Spec. Suffix</i>
No Plaster Key on Base: / F	
20mm outer step down: / ST	
Cant (50mm) Outer: / C 50	
Wide Inner (115mm): / WI 115	
Wide Inner (125mm): / WI 125	

**STANDARD DUTY**  
**2 LA 90**



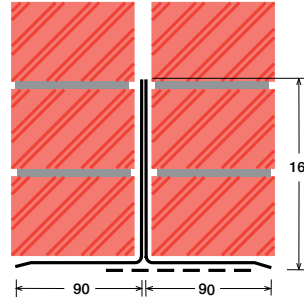
**Lintel Section Properties**

Ixx	99.92 cm <sup>4</sup>
Zxx	13.90 cm <sup>3</sup>
Weight	9.32 kg/m
Area	11.86 cm <sup>2</sup>
Ryy	3.94 cm

**Typical Optional Features**

<i>Option</i>	<i>Spec. Suffix</i>
No Plaster Key on Base: / F	
20mm outer step down: / ST	
Cant (50mm) Outer: / C 50	
Wide Inner (115mm): / WI 115	
Wide Inner (125mm): / WI 125	

**MEDIUM DUTY**  
**2 LA 160**



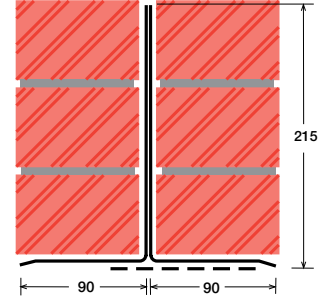
**Lintel Section Properties**

Ixx	453.20 cm <sup>4</sup>
Zxx	39.85 cm <sup>3</sup>
Weight	12.57 kg/m
Area	16.00 cm <sup>2</sup>
Ryy	3.40 cm

**Typical Optional Features**

<i>Option</i>	<i>Spec. Suffix</i>
No Plaster Key on Base: / F	
20mm outer step down: / ST	
Cant (50mm) Outer: / C 50	
Wide Inner (115mm): / WI 115	
Wide Inner (125mm): / WI 125	

**HEAVY DUTY**  
**2 LA 215**



**Lintel Section Properties**

Ixx	995.15 cm <sup>4</sup>
Zxx	68.71 cm <sup>3</sup>
Weight	15.16 kg/m
Area	19.30 cm <sup>2</sup>
Ryy	3.10 cm

**Typical Optional Features**

<i>Option</i>	<i>Spec. Suffix</i>
No Plaster Key on Base: / F	
20mm outer step down: / ST	
Cant (50mm) Outer: / C 50	
Wide Inner (115mm): / WI 115	
Wide Inner (125mm): / WI 125	

Lintel Load Capacity Table

Opening Span	Lintel Length	Safe Load kN
600	900	9
750	1050	7
900	1200	6
1050	1350	5
1200	1500	4

Where no load is shown a heavier duty lintel is needed

Lintel Load Capacity Table

Opening Span	Lintel Length	Safe Load kN
600	900	20
750	1050	20
900	1200	16
1050	1350	14
1200	1500	13
1350	1650	11
1500	1800	10
1650	1950	9
1800	2100	9

Where no load is shown a heavier duty lintel is needed

Lintel Load Capacity Table

Opening Span	Lintel Length	Safe Load kN
600	900	40
750	1050	40
900	1200	40
1050	1350	40
1200	1500	35
1350	1650	30
1500	1800	30
1650	1950	28
1800	2100	26
1950	2250	24
2100	2400	22
2250	2550	21
2400	2700	20

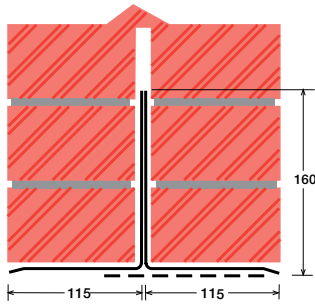
Where no load is shown a heavier duty lintel is needed

Lintel Load Capacity Table

Opening Span	Lintel Length	Safe Load kN
600	900	50
750	1050	50
900	1200	50
1050	1350	50
1200	1500	50
1350	1650	50
1500	1800	40
1650	1950	40
1800	2100	40
1950	2250	40
2100	2400	38
2250	2550	36
2400	2700	34
2550	2850	32
2700	3000	30
2850	3150	29
3000	3300	27
3150	3450	26
3300	3600	25
3450	3750	24
3600	3900	23
3750	4050	22
3900	4200	21
4050	4350	20
4200	4500	14
4350	4650	14
4500	4800	14

# Double Wall Lintels

MEDIUM DUTY  
**2 LA 160-250**



**Lintel Section Properties**

Ixx	482.76 cm <sup>4</sup>
Zxx	41.40 cm <sup>3</sup>
Weight	14.08 kg/m
Area	17.92 cm <sup>2</sup>
Ryy	4.60 cm

**Typical Optional Features**

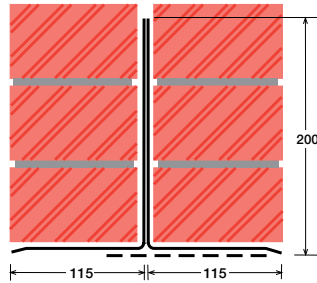
Option	Spec. Suffix
No Plaster Key on Base: / F	
20mm outer step down: / ST	
Cant (50mm) outer: / C 50	
Cant (100mm) outer: / C 100	
Wide Inner (125mm): / WI 125	

Lintel Load Capacity Table

Opening Span	Lintel Length	Safe Load kN
600	900	40
750	1050	40
900	1200	40
1050	1350	40
1200	1500	30
1350	1650	30
1500	1800	30
1650	1950	30
1800	2100	25
1950	2250	20
2100	2400	20
2250	2550	20
2400	2700	20
2550	2850	17
2700	3000	17
2850	3150	17
3000	3300	17

Where no load is shown a heavier duty lintel is needed

HEAVY DUTY  
**2 LA 200-250**



**Lintel Section Properties**

Ixx	861.84 cm <sup>4</sup>
Zxx	62.05 cm <sup>3</sup>
Weight	15.57 kg/m
Area	19.81 cm <sup>2</sup>
Ryy	4.36 cm

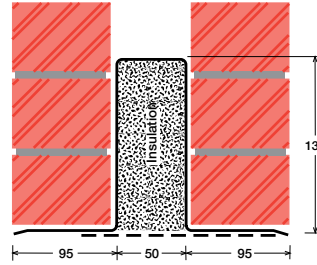
**Typical Optional Features**

Option	Spec. Suffix
No Plaster Key on Base: / F	
20mm outer step down: / ST	
Cant (50mm) outer: / C 50	
Cant (100mm) outer: / C 100	
Wide Inner (125mm): / WI 125	

Lintel Load Capacity Table

Opening Span	Lintel Length	Safe Load kN
600	900	50
750	1050	50
900	1200	50
1050	1350	50
1200	1500	50
1350	1650	40
1500	1800	40
1650	1950	40
1800	2100	40
1950	2250	30
2100	2400	30
2250	2550	30
2400	2700	30
2550	2850	20
2700	3000	20
2850	3150	20
3000	3300	20
3150	3450	20
3300	3600	20
3450	3750	20
3600	3900	20
3750	4050	15
3900	4200	15
4050	4350	15
4200	4500	15
4350	4650	15
4500	4800	15

STANDARD/MEDIUM DUTY  
**SS250**



**Lintel Section Properties**

Ixx	433.72 cm <sup>4</sup>
Zxx	49.33 cm <sup>3</sup>
Weight	13.31 kg/m
Area	16.95 cm <sup>2</sup>
Ryy	5.11 cm

**Typical Optional Features**

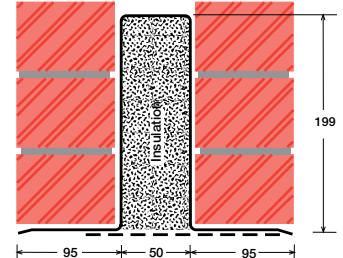
Option	Spec. Suffix
No Plaster Key on Base: / F	
20mm outer step down: / ST	
Cant (50mm) outer: / C 50	
Cant (100mm) outer: / C 100	
Wide Inner (125mm): / WI 125	

Lintel Load Capacity Table

Opening Span	Lintel Length	Safe Load kN
600	900	40
750	1050	40
900	1200	40
1050	1350	40
1200	1500	40
1350	1650	40
1500	1800	30
1650	1950	30
1800	2100	30
1950	2250	30
2100	2400	20
2250	2550	20
2400	2700	20
2550	2850	20
2700	3000	20

Where no load is shown a heavier duty lintel is needed

HEAVY DUTY  
**MS250**



**Lintel Section Properties**

Ixx	1124.19 cm <sup>4</sup>
Zxx	90.05 cm <sup>3</sup>
Weight	16.38 kg/m
Area	20.85 cm <sup>2</sup>
Ryy	4.72 cm

**Typical Optional Features**

Option	Spec. Suffix
No Plaster Key on Base: / F	
20mm outer step down: / ST	
Cant (50mm) outer: / C 50	
Cant (100mm) outer: / C 100	
Wide Inner (125mm): / WI 125	

Lintel Load Capacity Table

Opening Span	Lintel Length	Safe Load kN
600	900	80
750	1050	80
900	1200	80
1050	1350	80
1200	1500	80
1350	1650	60
1500	1800	60
1650	1950	60
1800	2100	50
1950	2250	50
2100	2400	50
2250	2550	45
2400	2700	45
2550	2850	40
2700	3000	40
2850	3150	34
3000	3300	34
3150	3450	34
3300	3600	30
3450	3750	28
3600	3900	28
3750	4050	28
3900	4200	25
4050	4350	24
4200	4500	24
4350	4650	20
4500	4800	20