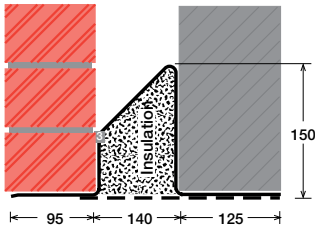


To suit walls with: Outer: 95mm - 115mm, Cavity: 140mm - 160mm, Inner: 125mm -

# Cavity Wall Lintels - 100/140/125

## LIGHT/STANDARD DUTY SC150Ea



### Lintel Section Properties

lxx	488.23 cm <sup>4</sup>
Zxx	46.97 cm <sup>3</sup>
Weight	16.15 kg/m
Area	20.56 cm <sup>2</sup>
Ryy	8.89 cm

Typical Optional Features	
Option	Spec. Suffix
Lintray (see p6)	Prefix /L
Feature Brick (see p9)	Suffix /FB
Outer step 20mm	Suffix /ST
Flat Base (no plaster key)	Suffix /F
Cant Outer (50mm)	Suffix /C
Wide Outer (125mm)	Suffix /WO

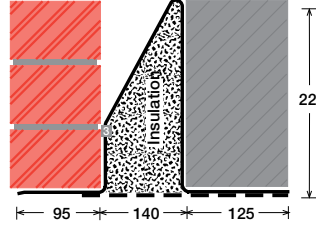
Permissible Load Ratio 1:1 - 1:5

### Lintel Load Capacity Table

Opening Span	Lintel Length	Safe Load kN
600	900	37
750	1050	37
900	1200	37
1050	1350	37
1200	1500	37
1350	1650	37
1500	1800	37
1650	1950	37
1800	2100	34
1950	2250	32
2100	2400	30
2250	2550	28
2400	2700	26
2550	2850	25

Where no load is shown a heavier duty lintel is needed

## STANDARD DUTY SC150Eb



### Lintel Section Properties

lxx	1213.90 cm <sup>4</sup>
Zxx	79.90 cm <sup>3</sup>
Weight	18.99 kg/m
Area	24.17 cm <sup>2</sup>
Ryy	8.67 cm

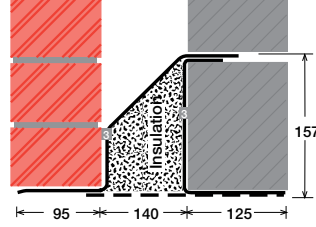
Typical Optional Features	
Option	Spec. Suffix
Lintray (see p6)	Prefix /L
Feature Brick (see p9)	Suffix /FB
Outer step of 20mm	Suffix /ST
Flat Base (no plaster key)	Suffix /F
Cant Outer (50mm)	Suffix /C
Wide Outer (125mm)	Suffix /WO

Permissible Load Ratio 1:1 - 1:5

### Lintel Load Capacity Table

Opening Span	Lintel Length	Safe Load kN
600	900	58
750	1050	58
900	1200	58
1050	1350	58
1200	1500	58
1350	1650	58
1500	1800	58
1650	1950	58
1800	2100	58
1950	2250	54
2100	2400	51
2250	2550	47
2400	2700	45
2550	2850	42
2700	3000	40
2850	3150	38
3000	3300	36
3150	3450	34
3300	3600	33
3450	3750	31
3600	3900	30
3750	4050	29
3900	4200	28
4050	4350	27
4200	4500	26
4350	4650	25
4500	4800	24

## MEDIUM DUTY MC150Ea



### Lintel Section Properties

lxx	815.31 cm <sup>4</sup>
Zxx	85.09 cm <sup>3</sup>
Weight	18.72 kg/m
Area	23.82 cm <sup>2</sup>
Ryy	8.64 cm

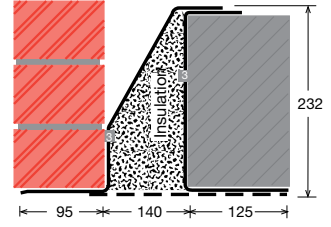
Typical Optional Features	
Option	Spec. Suffix
Lintray (see p6)	Prefix /L
Feature Brick (see p9)	Suffix /FB
Outer step of 20mm	Suffix /ST
Flat Base (no plaster key)	Suffix /F
Cant Outer (50mm)	Suffix /C
Wide Outer (125mm)	Suffix /WO

Permissible Load Ratio 1:1 - 1:19

### Lintel Load Capacity Table

Opening Span	Lintel Length	Safe Load kN
600	900	50
750	1050	50
900	1200	50
1050	1350	50
1200	1500	50
1350	1650	50
1500	1800	50
1650	1950	50
1800	2100	50
1950	2250	50
2100	2400	50
2250	2550	50
2400	2700	48
2550	2850	45
2700	3000	43
2850	3150	40
3000	3300	36
3150	3450	33
3300	3600	30
3450	3750	28
3600	3900	25
3750	4050	24
3900	4200	22
4050	4350	20
4200	4500	19
4350	4650	18
4500	4800	16

## MEDIUM/HEAVY DUTY MC100Eb



### Lintel Section Properties

lxx	1937.13 cm <sup>4</sup>
Zxx	139.25 cm <sup>3</sup>
Weight	21.76 kg/m
Area	27.70 cm <sup>2</sup>
Ryy	8.50 cm

Typical Optional Features	
Option	Spec. Suffix
Lintray (see p6)	Prefix /L
Feature Brick (see p9)	Suffix /FB
Outer step of 20mm	Suffix /ST
Flat Base (no plaster key)	Suffix /F
Cant Outer (50mm)	Suffix /C
Wide Outer (125mm)	Suffix /WO

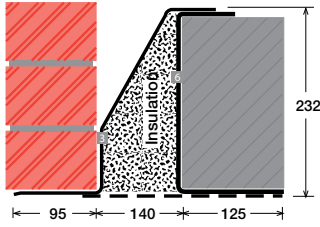
Permissible Load Ratio 1:1 - 1:19

### Lintel Load Capacity Table

Opening Span	Lintel Length	Safe Load kN
600	900	70
750	1050	70
900	1200	70
1050	1350	70
1200	1500	70
1350	1650	70
1500	1800	70
1650	1950	70
1800	2100	70
1950	2250	70
2100	2400	70
2250	2550	70
2400	2700	70
2550	2850	70
2700	3000	70
2850	3150	66
3000	3300	63
3150	3450	60
3300	3600	58
3450	3750	55
3600	3900	53
3750	4050	51
3900	4200	49
4050	4350	47
4200	4500	45
4350	4650	42
4500	4800	40

Within this basic wall construction there is considerable scope to tailor the section shape to your exact requirement using our many options and usually the lead time remains the same! These examples show possible option specifications:

HEAVY DUTY  
**HC150E**



Lintel Section Properties

lxx	2906.81 cm <sup>4</sup>
Zxx	212.68 cm <sup>3</sup>
Weight	31.63 kg/m
Area	40.26 cm <sup>2</sup>
Ryy	7.90 cm

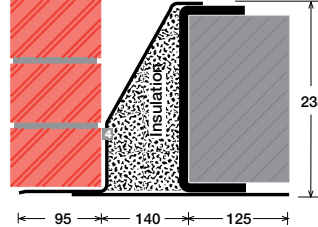
Typical Optional Features	
Option	Spec. Suffix
Lintray (see p6)	Prefix /L
Feature Brick (see p9)	Suffix /FB
Outer step of 20mm	Suffix /ST
Flat Base (no plaster key)	Suffix /F
Cant Outer (50mm)	Suffix /C
Wide Outer (125mm)	Suffix /WO

Permissible Load Ratio 1:1 - 1:19

Lintel Load Capacity Table

Opening Span	Lintel Length	Safe Load kN
600	900	80
750	1050	80
900	1200	80
1050	1350	80
1200	1500	80
1350	1650	80
1500	1800	80
1650	1950	80
1800	2100	80
1950	2250	80
2100	2400	80
2250	2550	80
2400	2700	80
2550	2850	80
2700	3000	80
2850	3150	80
3000	3300	80
3150	3450	80
3300	3600	80
3450	3750	80
3600	3900	80
3750	4050	78
3900	4200	75
4050	4350	72
4200	4500	68
4350	4650	64
4500	4800	60

HEAVY DUTY/LONG SPANS  
**EAL6 150E**



Lintel Section Properties

lxx	5667.61 cm <sup>4</sup>
Zxx	399.61 cm <sup>3</sup>
Weight	53.69 kg/m
Area	68.34 cm <sup>2</sup>
Ryy	7.80 cm

Typical Optional Features	
Option	Spec. Suffix
Lintray (see p6)	Prefix /L
Feature Brick (see p9)	Suffix /FB
Outer step of 20mm	Suffix /ST
Flat Base (no plaster key)	Suffix /F
Cant Outer (50mm)	Suffix /C
Wide Outer (125mm)	Suffix /WO

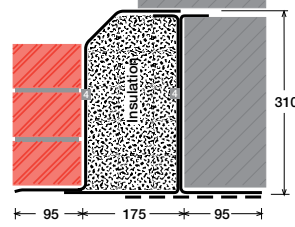
Permissible Load Ratio 1:1 - 1:19

Lintel Load Capacity Table

Opening Span	Lintel Length	Safe Load kN
600	900	182
900	1200	182
1200	1500	182
1500	1800	182
1800	2100	182
2100	2400	182
2400	2700	182
2700	3000	182
3000	3300	182
3300	3600	166
3600	3900	153
3900	4200	142
4200	4500	132
4500	4800	117
4800	5100	103
5100	5400	92
5400	5700	82
5700	6000	74
6000	6300	67
6300	6600	61
6600	6900	55
6900	7200	51
7200	7500	47
7500	7800	43
7800	8100	40
8100	8400	37

For material spec. see page 72

SUPER HEAVY DUTY/ LONG SPANS  
**HD4 275**



Lintel Section Properties

lxx	8708.75 cm <sup>4</sup>
Zxx	505.65 cm <sup>3</sup>
Weight	49.34 kg/m
Area	62.81 cm <sup>2</sup>
Ryy	8.39 cm

Typical Optional Features	
Option	Spec. Suffix
Lintray (see p6)	Prefix /L
Feature Brick (see p9)	Suffix /FB
Outer step of 20mm	Suffix /ST
Flat Base (no plaster key)	Suffix /F
Cant Outer (50mm)	Suffix /C
Wide Outer (125mm)	Suffix /WO

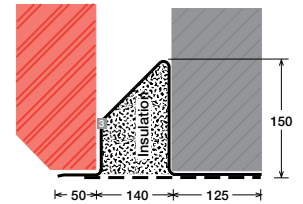
Permissible Load Ratio 1:1 - 1:19

Lintel Load Capacity Table

Opening Span	Lintel Length	Safe Load kN
600	900	231
900	1200	231
1200	1500	231
1500	1800	231
1800	2100	231
2100	2400	231
2400	2700	231
2700	3000	231
3000	3300	231
3300	3600	211
3600	3900	194
3900	4200	179
4200	4500	167
4500	4800	156
4800	5100	147
5100	5400	138
5400	5700	126
5700	6000	114
6000	6300	103
6300	6600	93
6600	6900	85
6900	7200	78
7200	7500	72
7500	7800	66
7800	8100	61
8100	8400	57

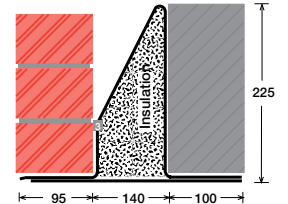
\*Stainless Steel only

**SC150Ea/C**



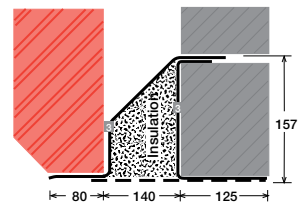
Lintel shown with optional cant outer (C)

**SC150Eb/F**



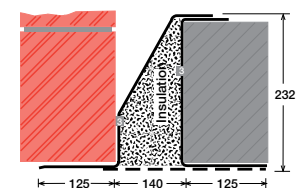
Lintel shown with optional flat base (F)

**MC150Ea/C 80**



Lintel shown with optional 80mm cant outer (C80)

**MC150Eb/WO**



Lintel shown with optional wide outer (WO)