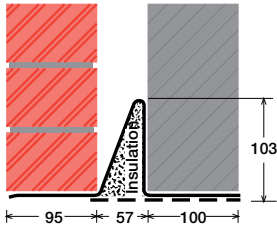


To suit walls with: Outer: 95mm - 115mm, Cavity: 57mm - 71mm, Inner: 100mm -

# Cavity Wall Lintels - 100/60/100

## LIGHT/STANDARD DUTY SC60a



### Lintel Section Properties

lxx	158.65 cm <sup>4</sup>
Zxx	20.54 cm <sup>3</sup>
Weight	11.29 kg/m
Area	14.37 cm <sup>2</sup>
Ryy	5.65 cm

### Typical Optional Features

Option	Spec. Suffix
Lintray (see p6)	Prefix /L
Feature Brick (see p9)	Suffix /FB
Outer step 20mm	Suffix /ST
Flat Base (no plaster key)	Suffix /F
Cant Outer (50mm)	Suffix /C
Wide Outer (125mm)	Suffix /WO

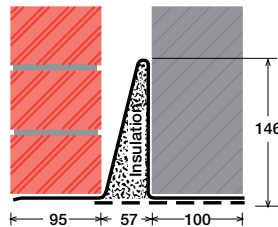
Permissible Load Ratio 1:1 - 1:5

### Lintel Load Capacity Table

Opening Span	Lintel Length	Safe Load kN
600	900	20
750	1050	20
900	1200	20
1050	1350	20
1200	1500	18
1350	1650	16

Where no load is shown  
a heavier duty lintel is needed

## STANDARD DUTY SC60b



### Lintel Section Properties

lxx	394.01 cm <sup>4</sup>
Zxx	38.33 cm <sup>3</sup>
Weight	13.53 kg/m
Area	17.25 cm <sup>2</sup>
Ryy	5.20 cm

### Typical Optional Features

Option	Spec. Suffix
Lintray (see p6)	Prefix /L
Feature Brick (see p9)	Suffix /FB
Outer step of 20mm	Suffix /ST
Flat Base (no plaster key)	Suffix /F
Cant Outer (50mm)	Suffix /C
Wide Outer (125mm)	Suffix /WO

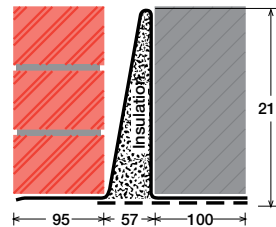
Permissible Load Ratio 1:1 - 1:5

### Lintel Load Capacity Table

Opening Span	Lintel Length	Safe Load kN
600	900	40
750	1050	40
900	1200	40
1050	1350	38
1200	1500	34
1350	1650	30
1500	1800	28
1650	1950	26
1800	2100	24
1950	2250	22
2100	2400	21
2250	2550	19
2400	2700	18
2550	2850	17

Where no load is shown  
a heavier duty lintel is needed

## MEDIUM DUTY SC60c



### Lintel Section Properties

lxx	1073.83 cm <sup>4</sup>
Zxx	76.51 cm <sup>3</sup>
Weight	17.18 kg/m
Area	21.87 cm <sup>2</sup>
Ryy	4.69 cm

### Typical Optional Features

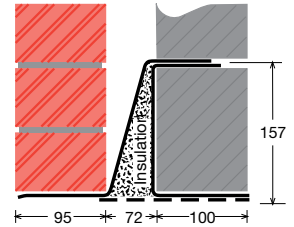
Option	Spec. Suffix
Lintray (see p6)	Prefix /L
Feature Brick (see p9)	Suffix /FB
Outer step of 20mm	Suffix /ST
Flat Base (no plaster key)	Suffix /F
Cant Outer (50mm)	Suffix /C
Wide Outer (125mm)	Suffix /WO

Permissible Load Ratio 1:1 - 1:5

### Lintel Load Capacity Table

Opening Span	Lintel Length	Safe Load kN
600	900	50
750	1050	50
900	1200	50
1050	1350	50
1200	1500	50
1350	1650	50
1500	1800	50
1650	1950	50
1800	2100	48
1950	2250	45
2100	2400	42
2250	2550	39
2400	2700	37
2550	2850	35
2700	3000	33
2850	3150	31
3000	3300	30
3150	3450	29
3300	3600	27
3450	3750	26
3600	3900	25
3750	4050	24
3900	4200	23
4050	4350	20
4200	4500	20
4350	4650	20
4500	4800	20

## MEDIUM/HEAVY DUTY MC60a



### Lintel Section Properties

lxx	822.88 cm <sup>4</sup>
Zxx	88.84 cm <sup>3</sup>
Weight	16.92 kg/m
Area	21.53 cm <sup>2</sup>
Ryy	5.00 cm

### Typical Optional Features

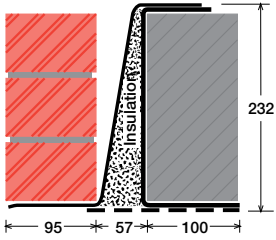
Option	Spec. Suffix
Lintray (see p6)	Prefix /L
Feature Brick (see p9)	Suffix /FB
Outer step of 20mm	Suffix /ST
Flat Base (no plaster key)	Suffix /F
Cant Outer (50mm)	Suffix /C
Wide Outer (125mm)	Suffix /WO

Permissible Load Ratio 1:1 - 1:19

### Lintel Load Capacity Table

Opening Span	Lintel Length	Safe Load kN
600	900	40
750	1050	40
900	1200	40
1050	1350	40
1200	1500	40
1350	1650	40
1500	1800	40
1650	1950	40
1800	2100	40
1950	2250	40
2100	2400	40
2250	2550	40
2400	2700	40
2550	2850	38
2700	3000	36
2850	3150	35
3000	3300	32
3150	3450	29
3300	3600	27
3450	3750	25
3600	3900	23
3750	4050	21
3900	4200	20
4050	4350	18
4200	4500	15
4350	4650	15
4500	4800	15

HEAVY DUTY  
**MC60b**



**Lintel Section Properties**

lxx	1928.17 cm <sup>4</sup>
Zxx	141.16 cm <sup>3</sup>
Weight	20.45 kg/m
Area	26.03 cm <sup>2</sup>
Ryy	4.46 cm

**Typical Optional Features**

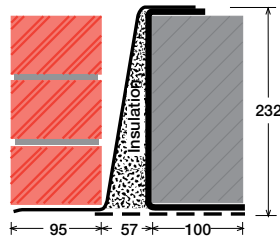
<i>Option</i>	<i>Spec. Suffix</i>
<b>Lintray</b> (see p6)	<b>Prefix /L</b>
<b>Feature Brick</b> (see p9)	<b>Suffix /FB</b>
<b>Outer step</b> of 20mm	<b>Suffix /ST</b>
<b>Flat Base</b> (no plaster key)	<b>Suffix /F</b>
<b>Cant Outer</b> (50mm)	<b>Suffix /C</b>
<b>Wide Outer</b> (125mm)	<b>Suffix /WO</b>

Permissible Load Ratio 1:1 - 1:19

Lintel Load Capacity Table

Opening Span	Lintel Length	Safe Load kN
600	900	60
750	1050	60
900	1200	60
1050	1350	60
1200	1500	60
1350	1650	60
1500	1800	60
1650	1950	60
1800	2100	60
1950	2250	60
2100	2400	60
2250	2550	60
2400	2700	60
2550	2850	60
2700	3000	60
2850	3150	58
3000	3300	56
3150	3450	53
3300	3600	51
3450	3750	49
3600	3900	47
3750	4050	45
3900	4200	43
4050	4350	42
4200	4500	40
4350	4650	39
4500	4800	38

HEAVY DUTY/LONG SPANS  
**HC60**



**Lintel Section Properties**

lxx	2755.12 cm <sup>4</sup>
Zxx	204.85 cm <sup>3</sup>
Weight	29.36 kg/m
Area	37.37 cm <sup>2</sup>
Ryy	4.32 cm

**Typical Optional Features**

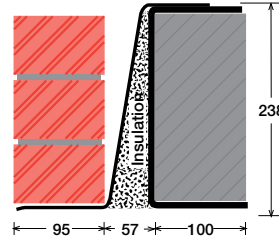
<i>Option</i>	<i>Spec. Suffix</i>
<b>Lintray</b> (see p6)	<b>Prefix /L</b>
<b>Feature Brick</b> (see p9)	<b>Suffix /FB</b>
<b>Outer step</b> of 20mm	<b>Suffix /ST</b>
<b>Flat Base</b> (no plaster key)	<b>Suffix /F</b>
<b>Cant Outer</b> (50mm)	<b>Suffix /C</b>
<b>Wide Outer</b> (125mm)	<b>Suffix /WO</b>

Permissible Load Ratio 1:1 - 1:19

Lintel Load Capacity Table

Opening Span	Lintel Length	Safe Load kN
600	900	80
750	1050	80
900	1200	80
1050	1350	80
1200	1500	80
1350	1650	80
1500	1800	80
1650	1950	80
1800	2100	80
1950	2250	80
2100	2400	80
2250	2550	80
2400	2700	80
2550	2850	80
2700	3000	80
2850	3150	80
3000	3300	80
3150	3450	77
3300	3600	74
3450	3750	71
3600	3900	68
3750	4050	65
3900	4200	50
4050	4350	50
4200	4500	50
4350	4650	50
4500	4800	50

SUPER HEAVY DUTY/ LONG SPANS  
**EAL6 60**



**Lintel Section Properties**

lxx	5207.62 cm <sup>4</sup>
Zxx	401.21 cm <sup>3</sup>
Weight	48.07 kg/m
Area	61.19 cm <sup>2</sup>
Ryy	4.22 cm

**Typical Optional Features**

<i>Option</i>	<i>Spec. Suffix</i>
<b>Lintray</b> (see p6)	<b>Prefix /L</b>
<b>Feature Brick</b> (see p9)	<b>Suffix /FB</b>
<b>Outer step</b> of 20mm	<b>Suffix /ST</b>
<b>Flat Base</b> (no plaster key)	<b>Suffix /F</b>
<b>Cant Outer</b> (50mm)	<b>Suffix /C</b>
<b>Wide Outer</b> (125mm)	<b>Suffix /WO</b>

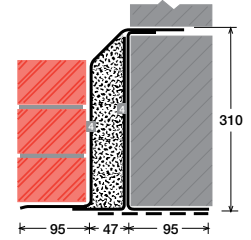
Permissible Load Ratio 1:1 - 1:19

Lintel Load Capacity Table

Opening Span	Lintel Length	Safe Load kN
600	900	183
900	1200	183
1200	1500	183
1500	1800	183
1800	2100	183
2100	2400	183
2400	2700	183
2700	3000	183
3000	3300	183
3300	3600	167
3600	3900	154
3900	4200	142
4200	4500	123
4500	4800	107
4800	5100	95
5100	5400	84
5400	5700	75
5700	6000	68
6000	6300	61
6300	6600	56
6600	6900	51
6900	7200	46
7200	7500	43
7500	7800	39
7800	8100	36
8100	8400	34

For material spec. see page 72

SUPER HEAVY DUTY/ LONG SPANS  
**HD4 150**



**Lintel Section Properties**

lxx	6476.04 cm <sup>4</sup>
Zxx	379.77 cm <sup>3</sup>
Weight	41.62 kg/m
Area	52.98 cm <sup>2</sup>
Ryy	3.80 cm

**Typical Optional Features**

<i>Option</i>	<i>Spec. Suffix</i>
<b>Lintray</b> (see p6)	<b>Prefix /L</b>
<b>Feature Brick</b> (see p9)	<b>Suffix /FB</b>
<b>Outer step</b> of 20mm	<b>Suffix /ST</b>
<b>Flat Base</b> (no plaster key)	<b>Suffix /F</b>
<b>Cant Outer</b> (50mm)	<b>Suffix /C</b>
<b>Wide Outer</b> (125mm)	<b>Suffix /WO</b>

Permissible Load Ratio 1:1 - 1:19

Lintel Load Capacity Table

Opening Span	Lintel Length	Safe Load kN
600	900	165
900	1200	165
1200	1500	165
1500	1800	165
1800	2100	165
2100	2400	165
2400	2700	165
2700	3000	165
3000	3300	165
3300	3600	158
3600	3900	145
3900	4200	135
4200	4500	125
4500	4800	117
4800	5100	110
5100	5400 *	104
5400	5700 *	94
5700	6000 *	84
6000	6300 *	76
6300	6600 *	69
6600	6900 *	63
6900	7200 *	58
7200	7500 *	53
7500	7800 *	49
7800	8100 *	45
8100	8400 *	42

\*Stainless Steel only